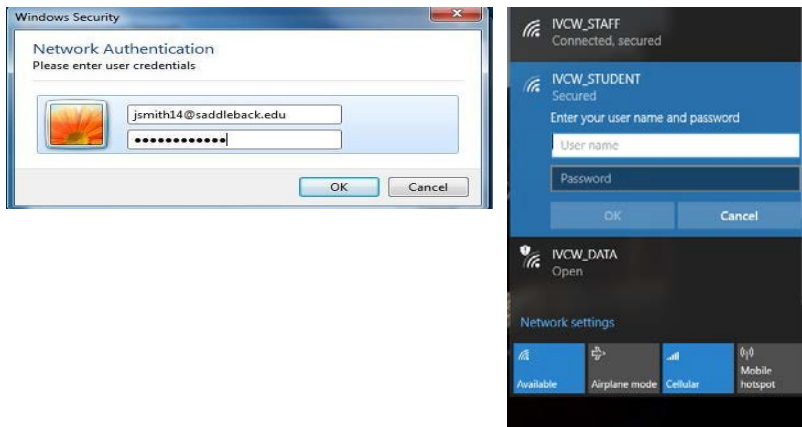


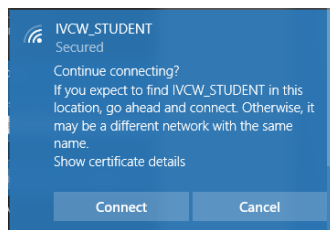
## Wireless Windows – Students/Staff

1. Select “Wireless” icon located in the lower right corner of the System Tray.
2. Select the appropriate **Network Name** from the list of available networks.  
Available Networks are:  
IVCW\_STAFF  
IVCW\_STUDENT
3. Type your **Full email address** and **email password** in the User Name and Password boxes.
4. Click OK.



Note: You may be prompted to enter credentials a second time, if the entry is incorrect or the process takes too long.

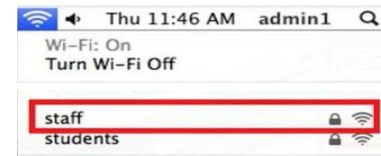
5. A “Continue connecting?” prompt may appear. Immediately click on “Connect”.



## Wireless Connection Mac

1. Select the "Wireless" icon located in the upper right hand corner in the system tray.
2. Select the appropriate Network Name from the list of available networks.

Available networks are:  
IVCW\_STAFF  
IVCW\_STUDENT



3. Type your Full email address and password. Click on JOIN. Example: jsmith99@ivc.edu.



NOTE: You may be prompted to enter credentials a second time.

4. Click on Continue to accept the SSL certificate.




5. You might be prompted to install the SSL certificate. Type your systems admin account login and click on Update Settings.

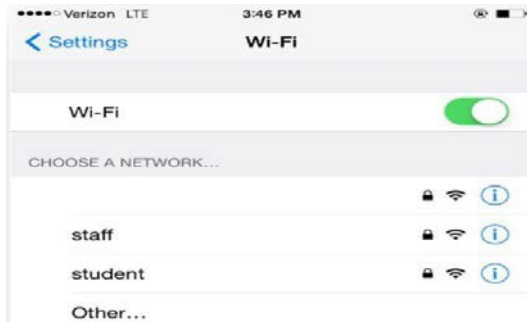
NOTE: To find your admin account go to the Apple menu on the top left corner > System Preferences, then click Users & Groups.



## Wireless Connection iPhones, iPads, iPods



1. Go to Settings,  and select Wi-Fi.
2. Select the appropriate Network Name from the list of available networks.  
Available networks are:  
IVCW\_STAFF  
IVCW\_STUDENT



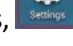
3. Type your Full email address and password. Click on JOIN. Example: jsmith99@ivc.edu.  
NOTE: You may be prompted to enter credentials a second time.

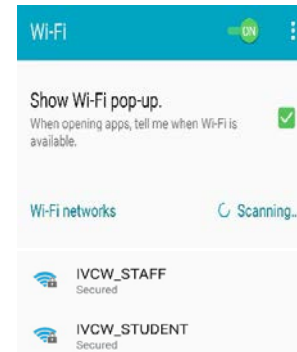


4. You may be prompted to accept a security certificate. Click on Accept to proceed.

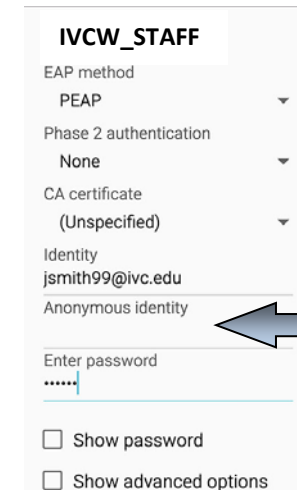
## Wireless Connection Android



1. Go to Settings,  and select Wi-Fi.
2. Select the appropriate Network Name from the list of available networks. Available networks are:  
IVCW\_STAFF  
IVCW\_STUDENT



3. Type your Full email address and password. Leave Anonymous identity blank. Click on **CONNECT**. Example: jsmith99@ivc.edu.



Leave "Anonymous identity" field blank

**NOTE:** You may be prompted to enter credentials a second time.

4. You may be prompted to accept a security certificate. Click on Accept to proceed.